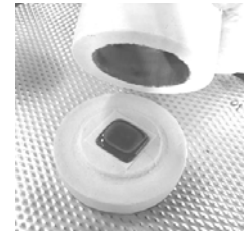




NEW

Fuseworks Microwave Kiln Kit #623849 \$99.95

Learn to fuse glass right in your microwave oven! Fuseworks Microwave kiln is lined with a high tech composite material specially formulated to fuse glass in a microwave 800 watts or higher. The 2.75" internal fusing platform is perfect for fusing jewelry pieces or embellishments in as little as 3 minutes. Small and compact it stores easily. Fuseworks makes glass fusing easy, safe and economical. Dimensions: 3-1/4" H x 4-1/2" W.



Microwave Kiln

Fuseworks Microwave Kiln Kit #623848 \$139.95

Learn to fuse glass right in your microwave oven! Create stunning pendant, fashionable earrings, snazzy bracelets and more. This is the easiest how-to-fuse kit you'll ever find. Great for young adults and grown-ups who want to learn a craft they'll enjoy for a lifetime! The kit includes: Fuseworks Microwave Kiln, 90 COE glass assortment, dichroic bits & pieces (1 oz), Millefiori glass (1 oz), confetti glass chips (1 oz), silver & gold earring sets (1 each); kiln paper (2 pcs); hot mitts and detailed instructional manual.

NEW

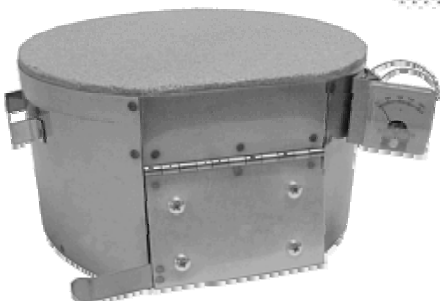


Skutt Fire Box 8 (120V) #FB-8 \$549.95

The Fire Box 8 is the perfect small kiln for fusing, PMC and more. Compact and convenient the Fire Box 8 plugs into any standard household outlet and is very mobile. Super fast and efficient, this little giant reaches fusing temperatures in less than 20 minutes. The easy to read digital pyrometer permits you to read the exact temperature in the kiln and allows you to precisely tell if the temperature is going up or down making holding at specific temperatures much easier. Safe to use the Fire Box 8 has a hinged lid so you do not have to worry about where to put the hot lid when you want to work inside the kiln. The lid opens over 90 degrees so it is out of your way when loading or working inside the kiln and the kiln is buckled to the base of the kiln so it can't slip off. *It's like quality and convenience met, got married and had a child named affordability!*



Jewelry & Hobby Kilns



Piggyback Annealer #PBA \$324.95

The Piggyback Bead Annealer is a bead annealing chamber designed to be used with an existing Hot Box, Studio 8 or similarly sized kiln. Simply remove the lid from your kiln and place the annealer on top. The Piggyback Bead Annealer contains a built-in pyrometer for precise annealing control and a flip-up door for easy insertion of mandrels. *The Piggyback Bead Annealer contains no heating elements, therefore it does not produce its own heat. All heat production and temperature control is performed by your existing kiln.*

Annealer



Evenheat Kilns

With over 50 years of experience in providing top-of-the-line kilns and superior customer service Evenheat is confident that you'll be glad you put your trust in them to create a kiln that will give you dependable and reliable firing results time after time.

In a kiln, quality and dependability are usually determined by the electrical components. Evenheat strives to select components that offer reliability and durability when exposed to the kiln environment. Their superior firebrick and one piece stainless steel jacket provide exceptional insulating and structural qualities.

Perhaps the most critical component of a glass fusing kiln is the temperature controller. It must be easy to use, accurate, reliable and consistent. All of these features are packed into both the SetPro and it's big brother the RampMaster II. Buy with confidence ... buy Evenheat!



Model	Catalog #	Price*
Hot Shot with SetPro Controller	GT14-6STP	\$995.95
GT18-9 with RampMaster II Controller	GT18-9RM	\$1,395.95
GT23-9 with RampMaster II Controller	GT23-9RM	\$1,695.95
GT23-13 with RampMaster II Controller	GT23-13RM	\$1,895.95
GT2541-9 with RampMaster II Controller	GT2541-9RM	\$2,149.95
GT2541-13 with RampMaster II Controller	GT2541-13RM	\$2,335.95

*Freight extra - ship weights vary. Call for details.



Skutt Kilns



Skutt Fire Box 14 FB-14 \$1,095.95*

Like its Hot Start cousin, the Fire Box 14 is compact and portable, but its larger square construction allows you to fuse a 12" square platter. It features the easy to use Glass Master LT temperature controller, low mass type-K thermocouple, as well as the convenience of standard household voltage (120V). Includes 8" stand. *Freight extra - ship weight 105 lbs.



Skutt Hot Start Pro HS-Pro \$ 929.95*

The perfect starter kiln, the Hot Start is compact and portable, yet large enough to easily fuse a 12" round platter. It features the easy to use Glass Master LT temperature controller and offers the convenience of standard household voltage (120V). Includes 8" stand. *Freight extra - ship weight 100 lbs.