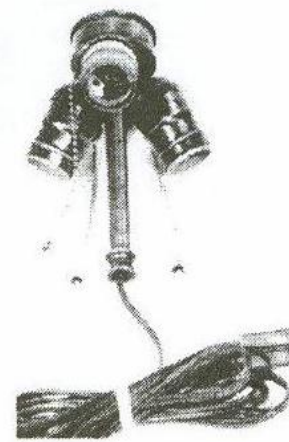


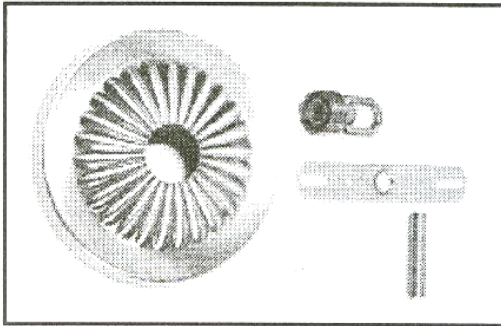
2-Light Cluster Assembly
#097950 \$69.95



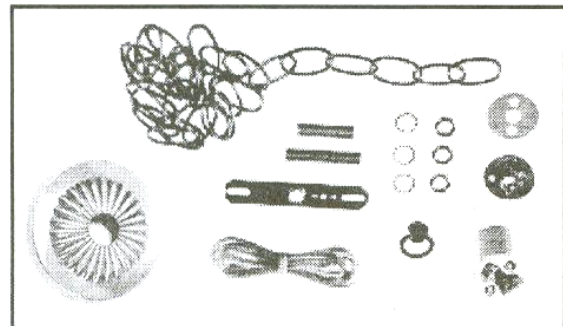
2-Way "S" Cluster Assembly
#097970 \$74.95



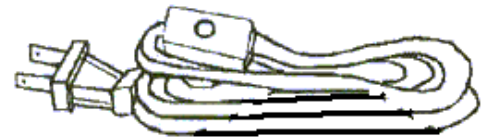
3-Light Cluster Assembly
#097960 \$89.95



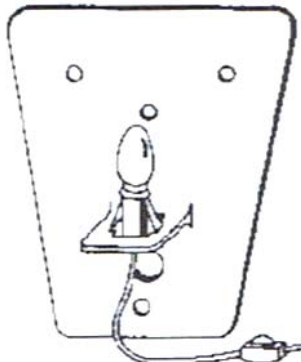
Canopy Kit #091200 \$9.95
Contains the hardware necessary to convert a swag, or similarly wired lamp, into a ceiling lamp. Antique brass finish.



Ceiling Lamp Kit #091100 \$32.95
Includes all electrical parts necessary to wire & hang a lamp into any ceiling box. UL listed & CSA approved. Antique Brass finish.



Fan Lamp Cord #096001 \$4.95
Features 6 feet of cord, molded plug, in-line switch and butterfly clip. Perfect for fanlamps. UL listed and CSA approved.



Bulk Lamp Cord SPT#1 \$0.50
UL listed and CSA approved shielded electrical cord perfect for wiring hanging lamps. Available in black, brown and lamp gold. Sold by the foot.

Wall Fixture Plate #090600 \$19.95
An easy to mount acrylic wall base on which to attach a stained glass wall sconce. Comes complete with mounting instructions and electrical components (#096002).



Loops & Finials



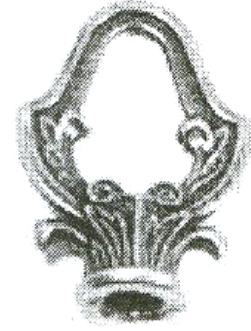
3/4" Loop (1/8F)
#091501 \$1.95



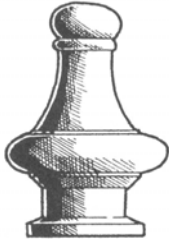
1" Loop (1/8F)
#091502 \$1.95



1-1/2" Loop (1/8F)
#091503 \$2.95



Fancy Loop (1/8F)
#091504 \$3.95



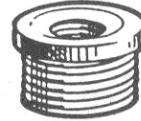
Small Pyramid Finial (1/8F)
#091560 \$1.95



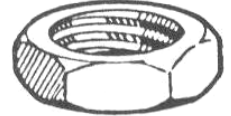
Acorn Finial (1/8F)
#091569 \$4.95



Bud Finial (1/8F)
#091571 \$4.95



Small Finial Adapter
#095020 \$1.50



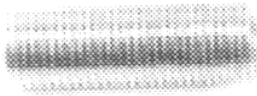
Hex Nut
#093004 \$0.50

Large Pyramid Finial (1/8F)
#091568 \$3.95

Large Finial Adapter
#095022 \$2.00



Lock Washer
#093050 \$0.25



1/2" Threaded Rod	#098990	\$0.60
3/4" Threaded Rod	#098991	\$0.75
1" Threaded Rod	#098992	\$0.75
1-1/2" Threaded Rod	#098993	\$1.15
2" Threaded Rod	#098994	\$1.30
2-1/2" Threaded Rod	#098995	\$1.40
3" Threaded Rod	#098996	\$1.50
3/6" Threaded Rod	#098997	\$6.95



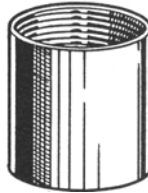
4" Light Duty	#092598	\$5.95
5" Light Duty	#092599	\$5.95
6" Light Duty	#092600	\$5.95
7" Heavy Duty	#092601	\$6.95
8" Heavy Duty	#092602	\$6.95
9" Heavy Duty	#092603	\$6.95
10" Heavy Duty	#092604	\$7.95
11" Heavy Duty	#092605	\$7.95
12" Heavy Duty	#092606	\$8.95
13" Heavy Duty	#092607	\$8.95
14" Heavy Duty	#092608	\$8.95
15" Heavy Duty	#093609	\$8.95

Harps, Sockets & More



Screw the riser onto the lamp base's harp to adjust the shade to an appropriate height. Solid brass.

0.5"	#094501	\$2.95
0.75"	#094505	\$2.95
1.0"	#094502	\$2.95
1.5"	#094503	\$3.95
2.0"	#094504	\$3.95
2.5"	#094506	\$3.95



Porcelain Socket	#091650	\$5.95
Bakelite Socket	#091691	\$2.95
Candelabra Socket (w/ Liner)	#091661	\$2.95
Brass Turn Knob Socket	#091659	\$6.95
Brass Push Thru Socket	#091693	\$6.95
Brass Keyless Socket	#091696	\$6.95
Brass Pull Chain Socket	#091691	\$6.95
Brass 3-Terminal Socket	#091660	\$8.95

All sockets are UL Listed & CSA Approved



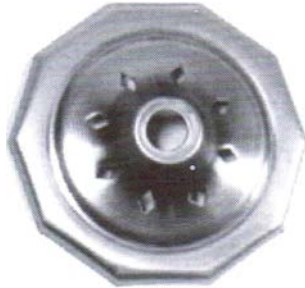
6-Side Vase Cap ~ Vented
#091860 \$5.95



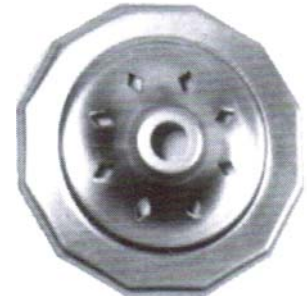
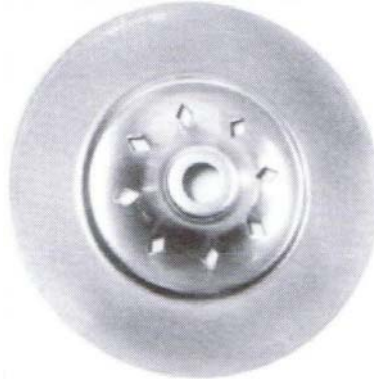
8-Side Vase Cap ~ Vented
#091861 \$5.95



Large Square Vase Cap
#091856 \$5.95



10-Side Vase Cap
#091862 \$5.95



12-Side Vase Cap
#091863 \$5.95

Brass Spun Vase Caps

1.0"	#091900	\$3.95
1.5"	#091954	\$3.95
2.0"	#091957	\$3.95
2.5"	#091964	\$4.95
3.0"	#091966	\$4.95
3.5"	#091970	\$4.95
4.0"	#091974	\$5.95
4.5"	#091978	\$6.95
5.0"	#091982	\$8.95
5.5"	#091986	\$9.95
6.0"	#091990	\$11.95



3-Way Brass Spider
#093251 \$5.95



4-Way Brass Spider
#093252 \$5.95

How to Tin a Vase Cap

Typically, we want the finish on our projects to be consistent. Whether we are leaving the solder its natural silver or patinaing it black or copper, we want all the solder to be similar. Patinas react with tin, that is the tin in the solder. They will not react with the bare brass of the vase cap.

The secret to successfully tinning vase cap, or filigree, to apply a sufficient amount of flux to the brass, add plenty of direct heat, and add as little solder as possible - just enough to cover or "tin" the surface.

Flux is required to encourage the solder to flow. The excess flux might burn and leave a black residue on the vase cap. This is NOT a problem, it washes off very easily in sudsy water. Use a hot iron and GO SLOW. Many people rush, thinking they will melt the vase cap. Have no fear ... it will not be melted by your soldering iron! Go slow to allow the heat to be absorbed by the brass and radiate through the area. Watch carefully and you can actually see this happening. Work from the top of the cap, tinning the area until you reach the bottom edge. Don't forget the tiny "lip" where the cap curls under, this will be visible once the lamp is hung. Add as little solder as possible, since too much solder will clump and look unsightly once cooled. Our goal is to attach a thin, but complete, layer of solder over the brass. Amazingly, little solder is needed to achieve this task. However, don't forget to flux thoroughly and frequently, and go slow allowing the heat to radiate through the vase cap to encourage the flux to flow. Keep trying, practice & patience prevail!



Mini Lamp Bases

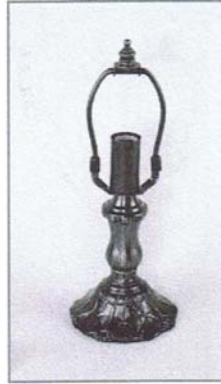
All lamp bases, illustrated on this page, come fully wired with a candelabra style socket and are equipped with a harp and finial. Antique brass finish. CSA approved.



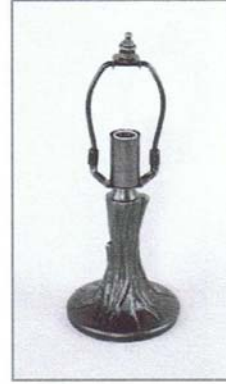
4-3/4" Rose
#9102 \$52.95



4-3/4" Classic
#9104 \$67.95



5" Lily
#9110 \$58.95



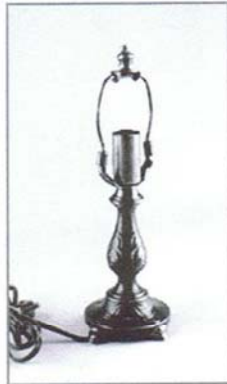
5" Tree
#9112 \$57.95



5" Gothic
#9113 \$56.95



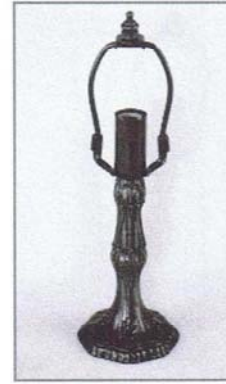
5-1/2" Pompeii
#9116 \$57.95



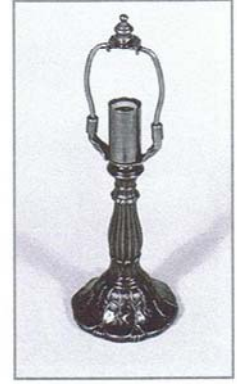
5-1/2" Art Deco
#9105 \$62.95



5-1/2" Fluted
#9106 \$62.95



6" Pompeii
#9103 \$57.95



5-1/2" Lily
#9115 \$57.95



6" Flora
#9100 \$61.95



6" Belle
#9101 \$61.95



Atlantic Stained Glass Bright Idea

Are you having trouble tinning your brass filigrees and accents? Tinning simply refers to the process of coating the metal with a very thin layer of solder. Tinning is necessary if you want the natural silver color or intend to treat the filigree with a black or copper patina.

If you coat the filigree with too much solder, you will obliterate the detail. The key ingredients are flux, heat (lots of it) and solder, the less the better. The flux and heat will encourage the solder to flow thinly and evenly. Work on going slowly and you will be better able to apply that desirable thin, even coat. *Don't hold the filigree with your bare fingers! Practice makes perfect!*

Small & Midi Lamp Bases

All lamp bases, illustrated on this page, come fully wired with a push-thru standard style socket and are equipped with a harp and finial. Antique brass finish. CSA approved.

Small Lamp Bases



7-1/4" Classic
#9027 \$78.95



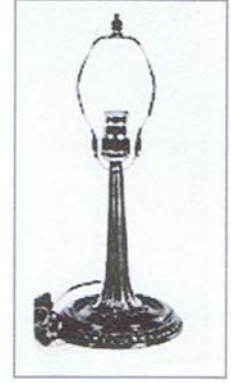
7-1/2" Pompeii
#9001 \$59.95



7-1/2" Tree
#9014 \$66.95



7-3/4" Clari
#9071 \$75.95



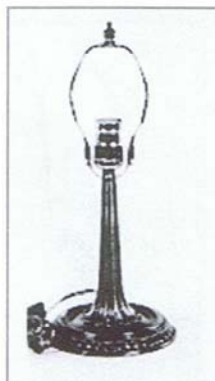
7-3/4" Nouveau
#9005 \$66.95



7-3/4" Flora
#9108 \$86.95



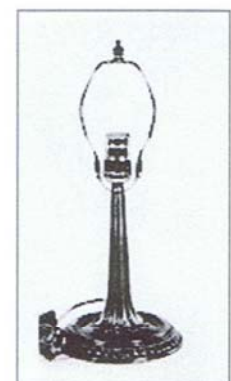
7-3/4" Lily
#9034 \$68.95



8" Parisian
#9008 \$81.95



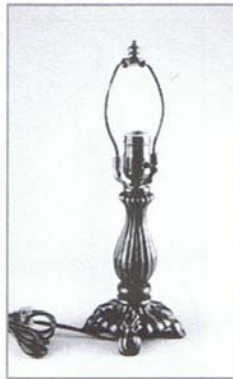
8" Grace
#9269 \$98.95



8-3/4" Kelly
#9055 \$94.95



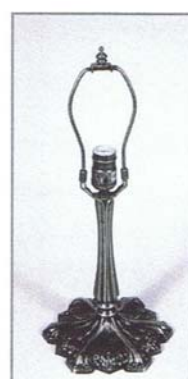
8" Mission
#9098 \$75.95



8" Prairie
#9099 \$89.95



9" Pompeii
#9002 \$84.95



9" Fluted
#9056 \$99.95



9-3/4" Rose
#9029 \$99.95



Medium Lamp Bases

All lamp bases, illustrated on this page, come fully wired with a 3-way turn knob standard style socket and are equipped with a harp and finial. Antique brass finish. CSA approved.

Medium Lamp Bases



10-1/2" Tree
#9015 \$99.95



10-1/2" Scroll
#9019 \$99.95



10-1/2" Lily
#9035 \$99.95



10-1/2" Spindle
#9058 \$134.95



11" Nouveau
#9006 \$99.95



11" Parisian
#9009 \$119.95



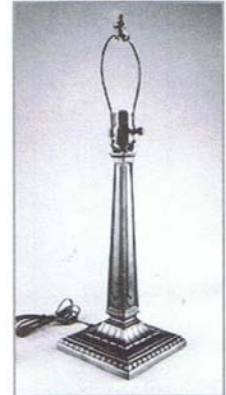
12" Sydney
#9268 \$119.95



12-1/2" Pompeii
#9003 \$119.95



12-3/4" Baroque
#9031 \$119.95



13-1/2" Mission
#9097 \$139.95

A Brief Glimpse into the Legacy of Glass

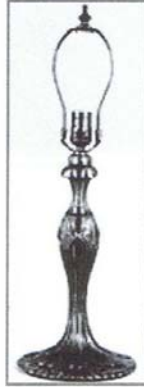
As artisans, we have become so accustomed to crafting with glass, we seem oblivious to the multiple roles glass plays in our everyday life. As a matter of fact, a world without glass is almost inconceivable and many of mankind's greatest scientific achievements would not be possible if it weren't for glass.

Molten glass can be rolled, molded, blown, cast or drawn into countless shapes and sizes, from as small as a fiber one millionth of an inch in diameter to as large as our imaginations allow. Glass permits the comfort of a sunlit room protected from the outside elements. Glass absorbs and reflects harmful radiation. The light bulb would not be possible without glass and the all consuming television owes its function to glass, not only in its viewing screen, but also the tube that generates the image. Glass forms the basis for mirrors, which along with shaped glass make the science of optics possible. Without optics, many in society could not see properly and none of us could see beyond our skies, deep in to the heavens as we do today.

Thanks to glass we are able to physically explore space and protect our astronauts from the tremendous pressure differential, as well as withstand the enormous heat generated by re-entry into earth's atmosphere. Glass is also strong enough to withstand the immense pressures created by our own world in deep sea exploration. Glass is perfectly suited for medical science; it's durable, odor resistant, non-contaminating, can be completely sterilized and sealed. Also, today's high-speed information highway cruises along "freeways" of fiber optics constructed of glass.

Large Lamp Bases

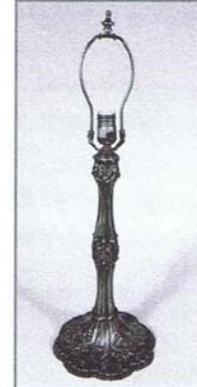
All lamp bases, illustrated on this page, come fully wired with a 3-way turn knob standard style socket and are equipped with a harp and finial. Antique brass finish. CSA approved.



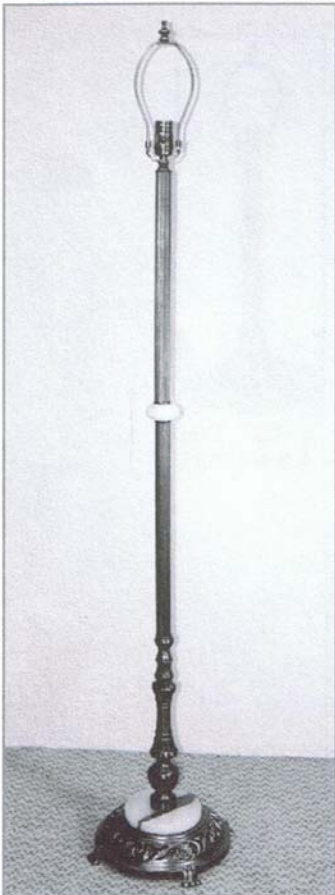
14-1/2" Nouveau
#9007 \$139.95



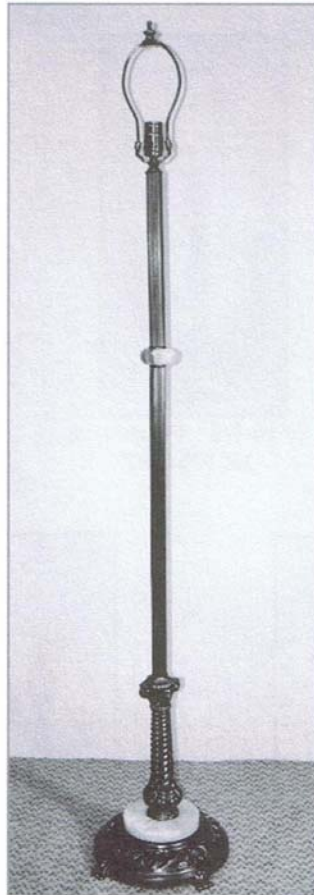
15-1/4" Lily
#9036 \$159.95



16-1/2" Pompeii
#9004 \$169.95



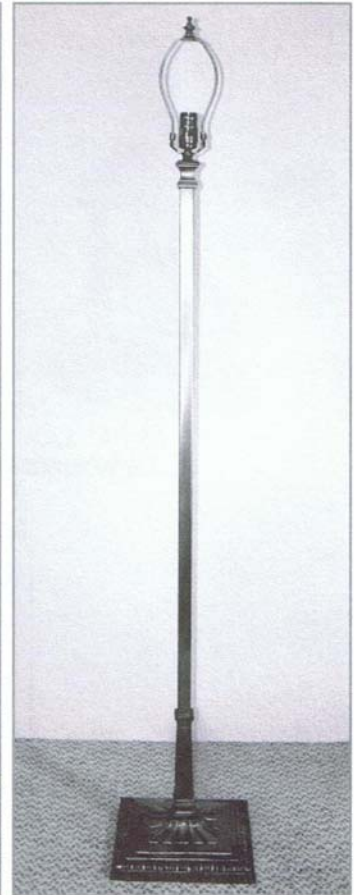
53" Viceroy w/ Onyx
#9500 \$289.95



52" Rope w/ Onyx
#9501 \$289.95



53" Acorn w/ Onyx
#9503 \$289.95



52" Mission
#9507 \$289.95